

TRANSFORMERS

REVENGE OF THE FALLEN™

MEGATRON
DECEPTICON®

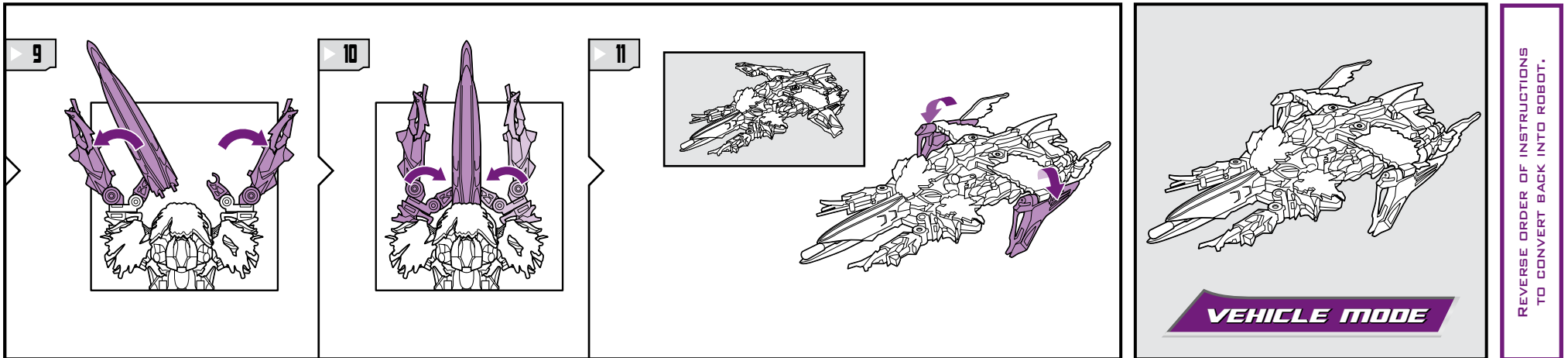
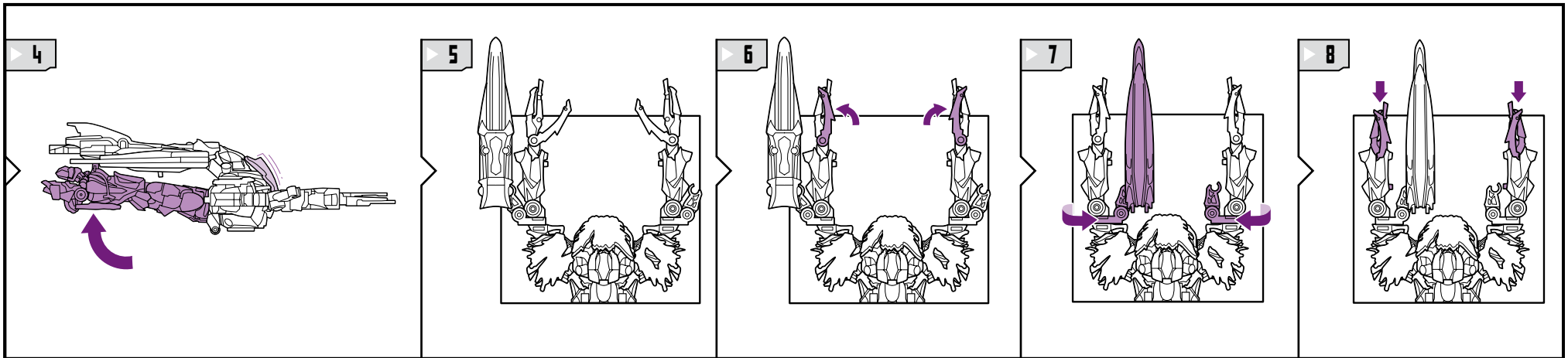
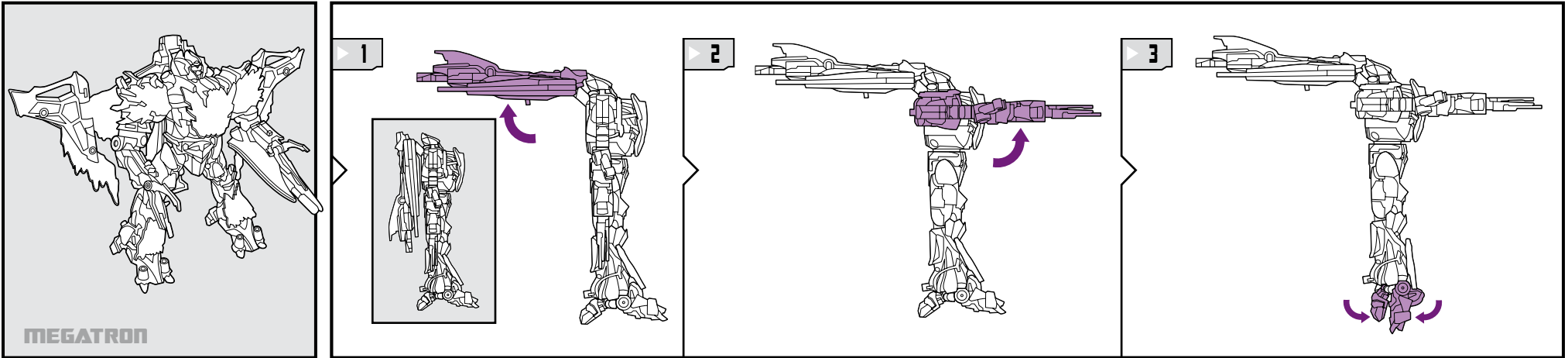
AGES 5+
94683/93420 Ass.



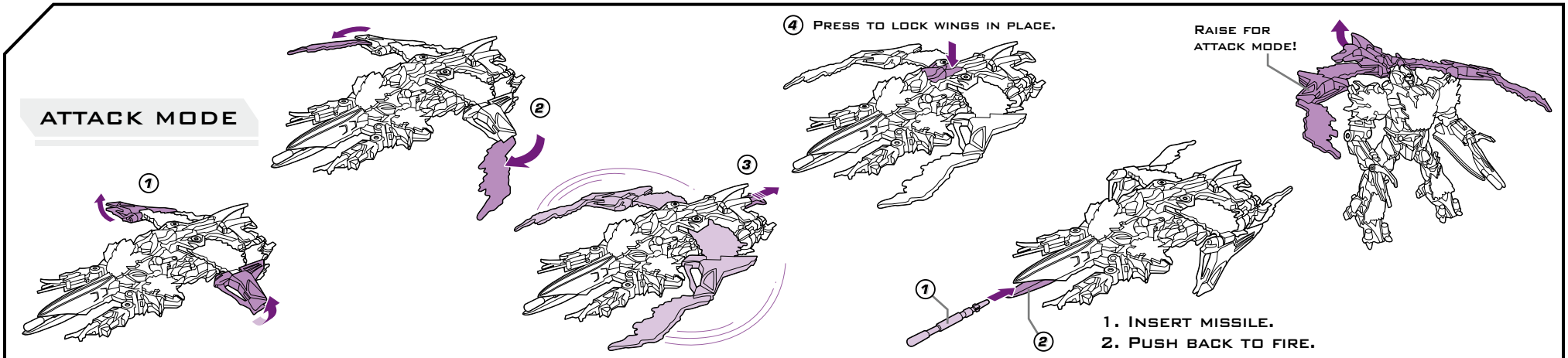
NOTE: Some parts are made to detach if excessive force is applied and are designed to be reattached if separation occurs. Adult supervision may be necessary for younger children.

TRANSFORMERS.COM

CHANGING TO VEHICLE



REVERSE ORDER OF INSTRUCTIONS TO CONVERT BACK INTO ROBOT.



Some poses may require hand support.



© 2009 DreamWorks LLC and Paramount Pictures Corporation
© 2009 Hasbro. All Rights Reserved.
TM & ® denote U.S. Trademarks.
Manufactured under license from Tomy Company, Ltd.



P/N 6955140000

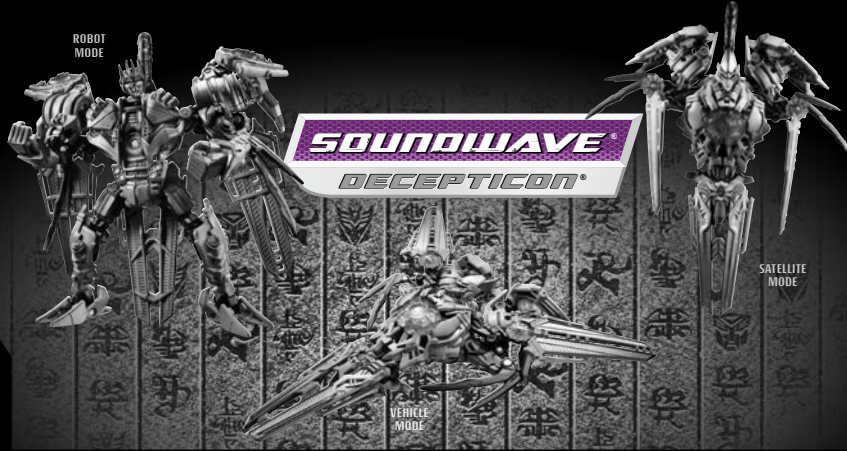
TRANSFORMERS.COM



Not suitable for children under 3 years because of small parts - choking hazard.

TRANSFORMERS

REVENGE OF THE FALLEN™



AGES 5+
94683/93420 Asst.

NOTE: Some parts are made to detach if excessive force is applied and are designed to be reattached if separation occurs. Adult supervision may be necessary for younger children.

TRANSFORMERS.COM

CHANGING TO SATELLITE

1

2

3

4

5

6

7

8

9

10

11

12

13

SATELLITE MODE

CHANGING TO VEHICLE

1

2

VEHICLE MODE

1 INSERT MISSILE.
2 PUSH BUTTON TO FIRE.



© 2009 DreamWorks LLC and Paramount Pictures Corporation
© 2009 Hasbro. All Rights Reserved.
TM & © denote U.S. Trademarks.
Manufactured under license from Tomy Company, Ltd.



P/N 695515000

Some poses may require hand support.

TRANSFORMERS.COM

REVERSE ORDER OF INSTRUCTIONS
TO CONVERT BACK INTO ROBOT.

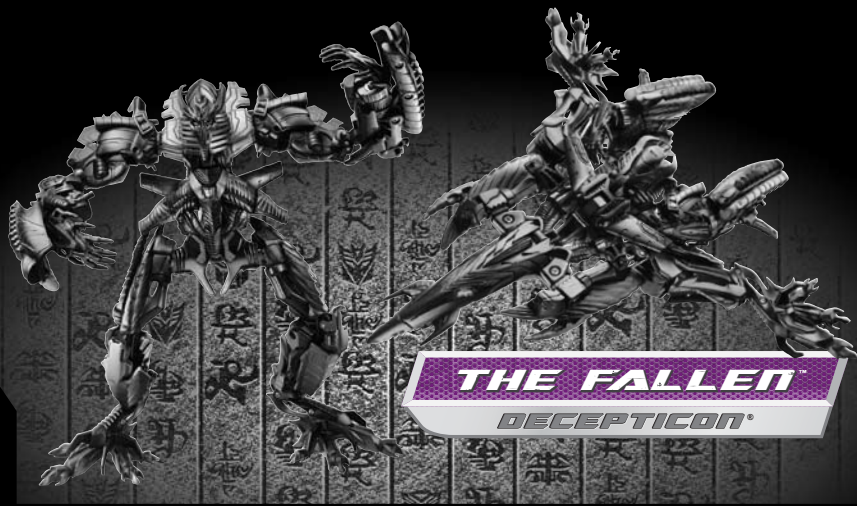


Not suitable for children under 3 years because of small parts – choking hazard.

TRANSFORMERS

REVENGE OF THE FALLEN™

AGES 5+
94683/93420 Ass't.



THE FALLEN
DECEPTICON®

TRANSFORMERS.COM

NOTE: Some parts are made to detach if excessive force is applied and are designed to be reattached if separation occurs. Adult supervision may be necessary for younger children.

CHANGING TO VEHICLE

THE FALLEN

1

2

3

4

5

6

7

8

9

10

11

12

13

VEHICLE MODE

REVERSE ORDER OF INSTRUCTIONS
TO CONVERT BACK TO ROBOT.

Some poses may require hand support.

Hasbro
© 2009 DreamWorks LLC and Paramount Pictures Corporation
© 2009 Hasbro. All Rights Reserved.
TM & © denote U.S. Trademarks.
Manufactured under license from Tomy Company, Ltd.

DREAMWORKS
PICTURES



P/N 695516000

TRANSFORMERS.COM

! Not suitable for children under 3 years because of small parts – choking hazard.